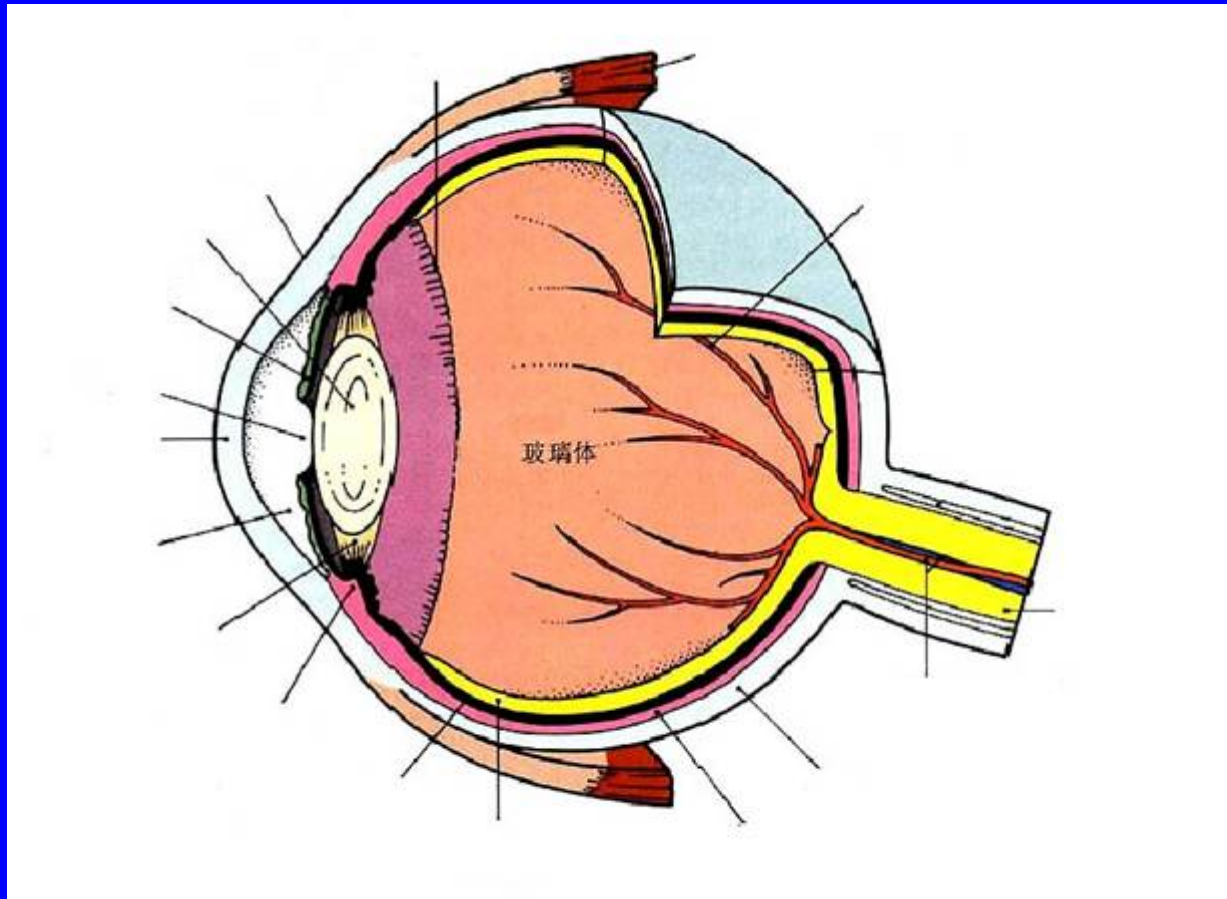


# EYE AND EAR

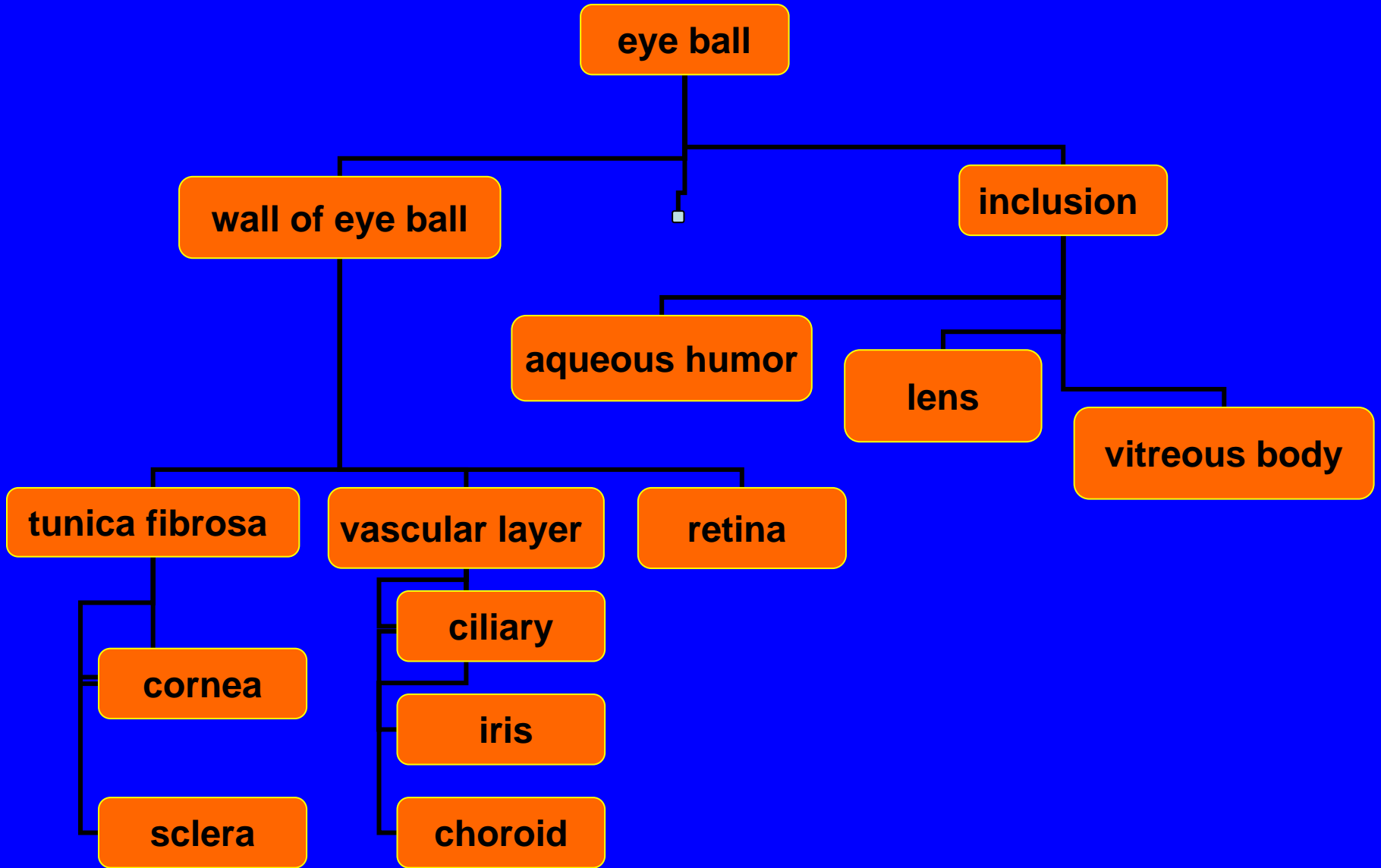
## 1. Eye

- **Including eye balls and accessory structure of the eye**

**eye balls consist of wall of eye balls and inclusion**



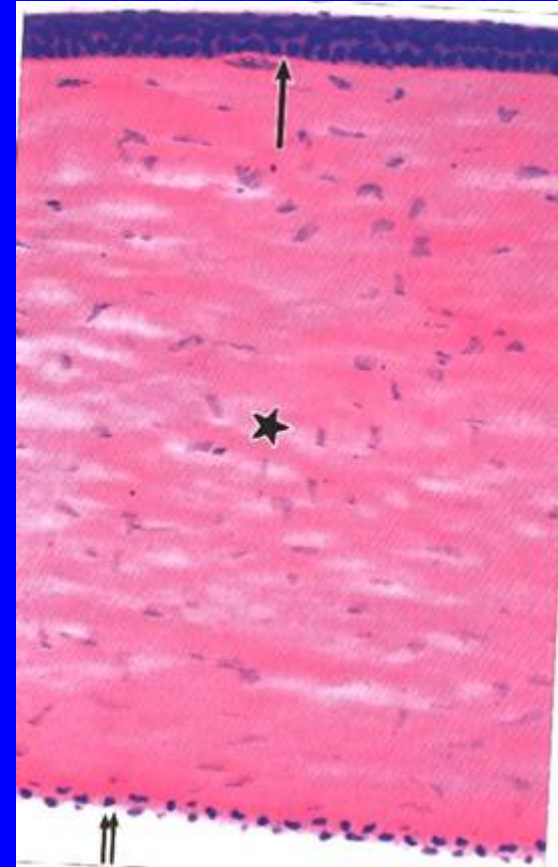
**wall of eye balls**



# wall of eye balls

## 1. cornea

- (1) corneal epithelium:
- (2) anterior limiting lamina:
- (3) corneal stroma:
- (4) posterior limiting lamina:
- (5) corneal endothelium:



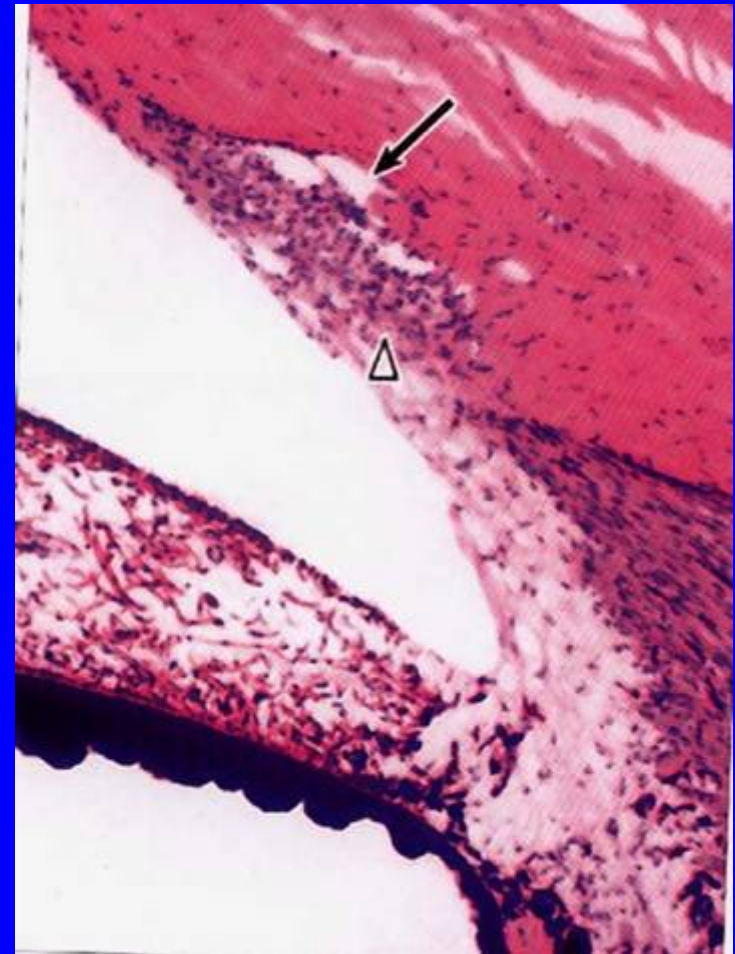
**2. Sclera Dense  
connective tissue**

**Corneal limbus**

**Sinus venosus**

**Trabecular meshwork**

**Scleral spur**



# 3. Iris

## pupil

Iris is mainly composed of loose connective tissue with abundant vessel and pigmental cells

(1) anterior border layer:

(2) iris stroma:

(3) iris epithelium:

① anterior epithelium

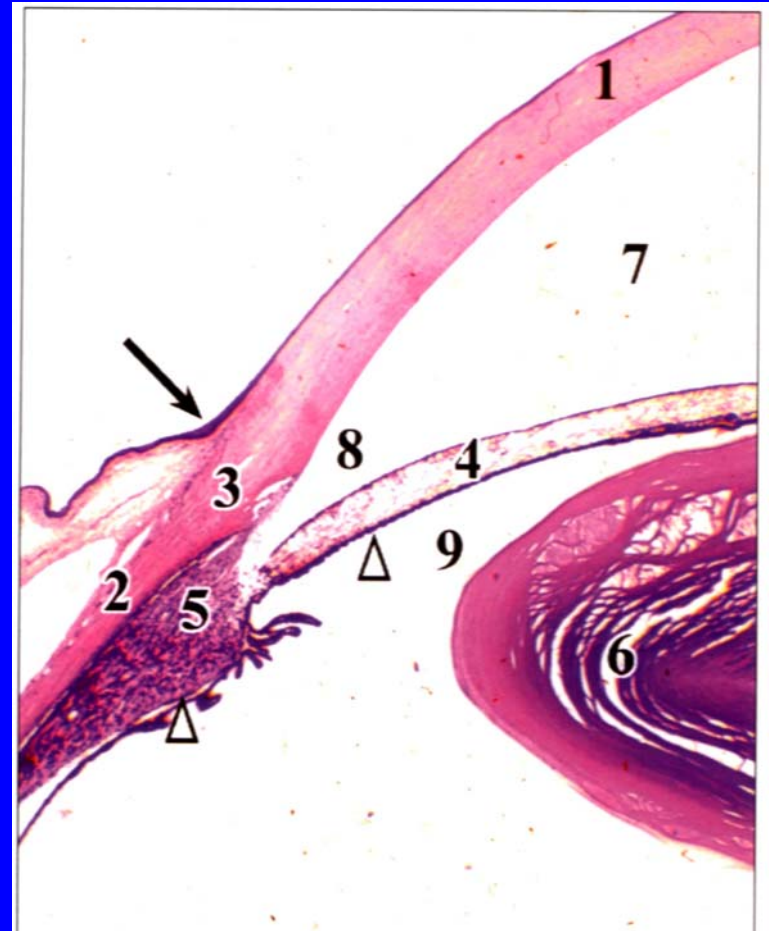
sphincter pupillae muscle,

dilator pupillae muscle

② posterior:

## 4. ciliary body

- Ciliary processes
  - ciliary zonule
- (1) **ciliary muscle:**  
(2) **ciliary stroma:**  
(3) ciliary body epithelium:  
**internal sublayer**  
**external sublayer**



## **5. choroid**

**loose connective tissue with abundant blood vessel and pigment cells**

## **6. retina: high differentiation nervous tissue**

**4 layers of cells:**

**(1) Pigment epithelium**

**(2) Visual cells**

**(3) Bipolar cells**

**(4) Ganglion cells**

**Interneuron and glial cells**



**(1) pigment epithelium:**

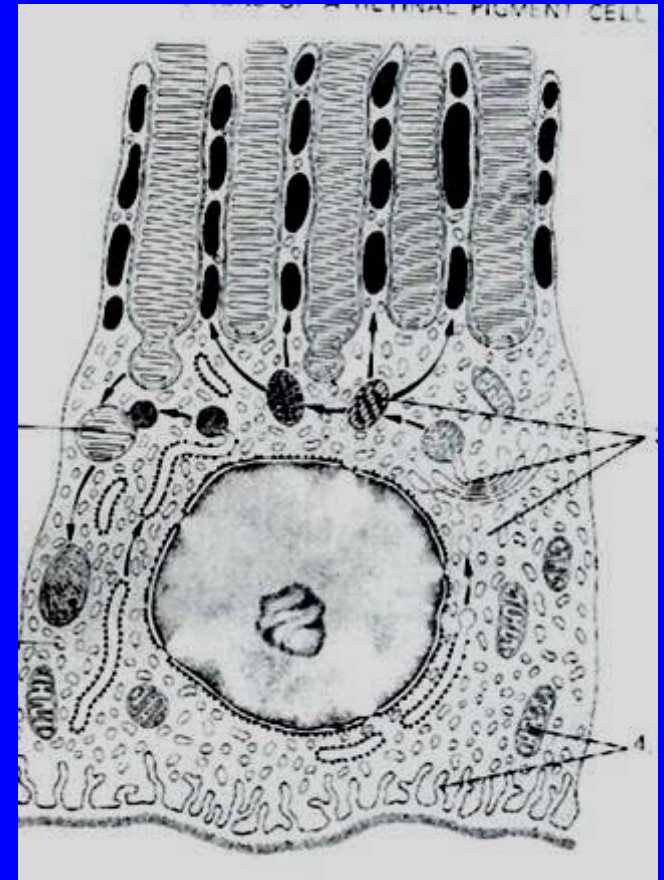
**LM:**

**EM:**

**function:**

**(2) visual cell:**

**bipolar neuron, the rod  
and the cones, inner  
segment and outer segment**



## rod cells:

**EM: inner segment:**  
mitochondria, RER, Golgi complex and microtubules

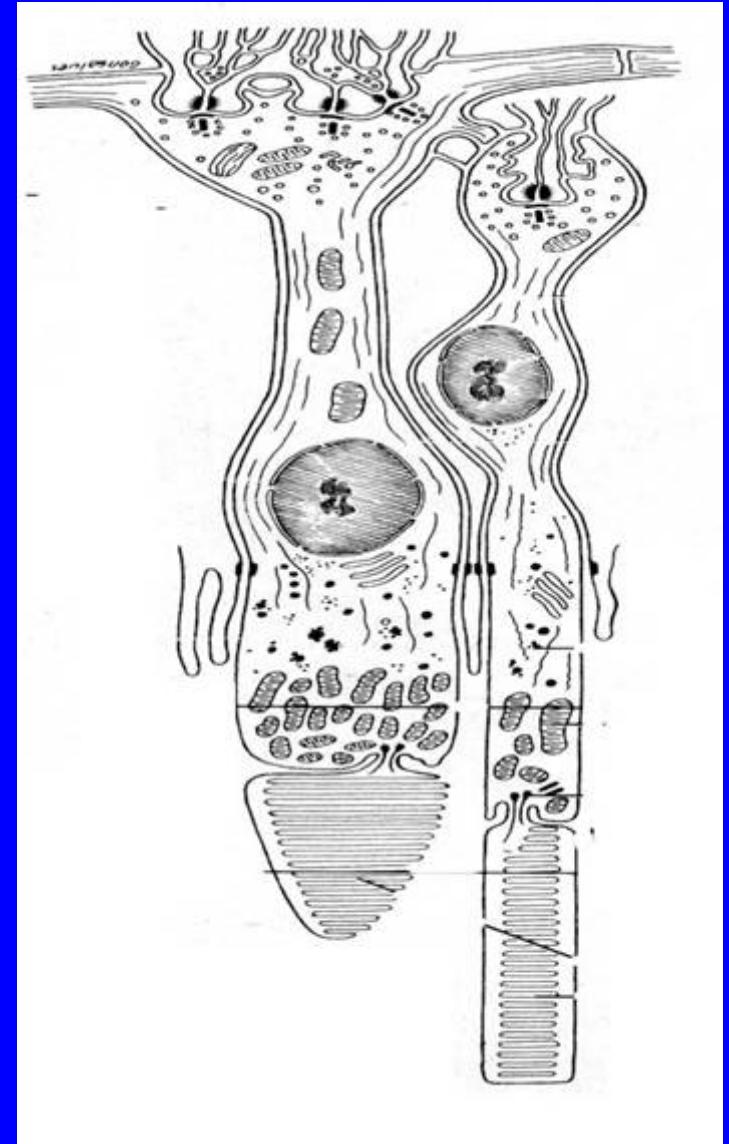
**outer segment:**

**membranous disk**

**rhodopsin (11-cisretinal  
and opsin) Vitamine A**

## cone cells:

membranous disk, three  
kinds of cone cells, visual  
pigment (iodopsin)



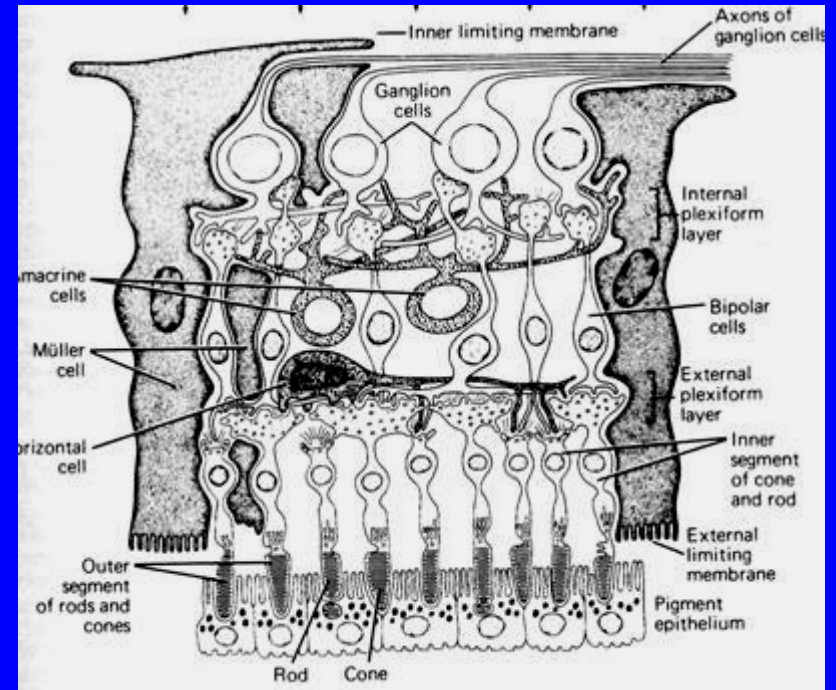
(3) bipolar cells:

(4) ganglion cells: multipolar neuron with long axon forming optic nerve

(5) horizontal cells, amacrine cells and interplexiform cells

(6) radial neuroglia cells so called Müller cells:

The processes form internal and external limiting membrane



# **INCLUSION OF EYE BALL**

## **1. lens:**

**Lens capsule:**

**Lens epithelium:**

**Lens fiber:**

## **2. vitreous body:**

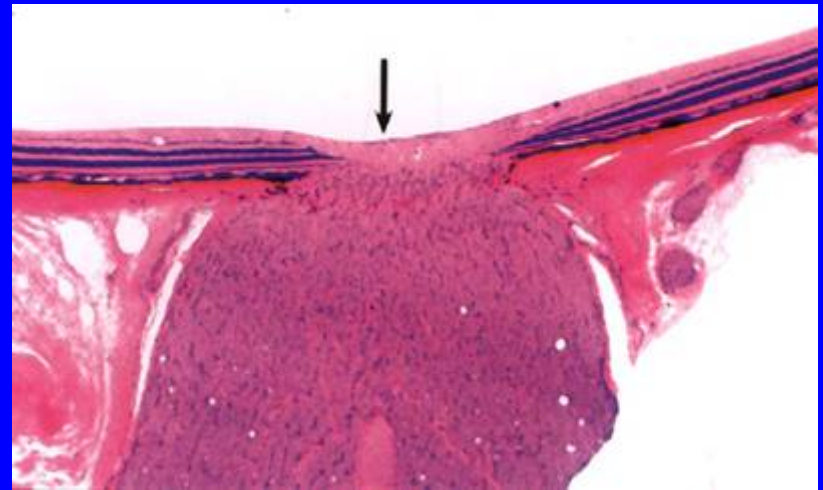
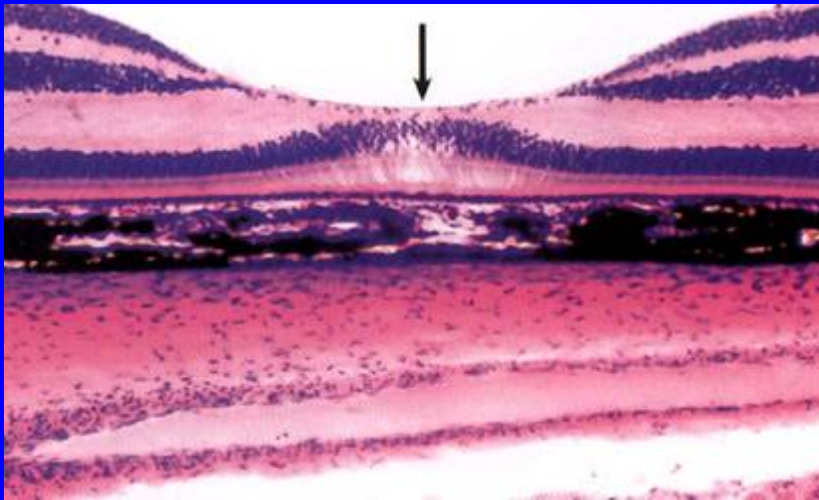
## **3. aqueous humor:**

**circulation of aqueous humor**

## (7) macula lutea and papilla of optic nerve

macula lutea: central fovea, no the rod cells  
(visual center)

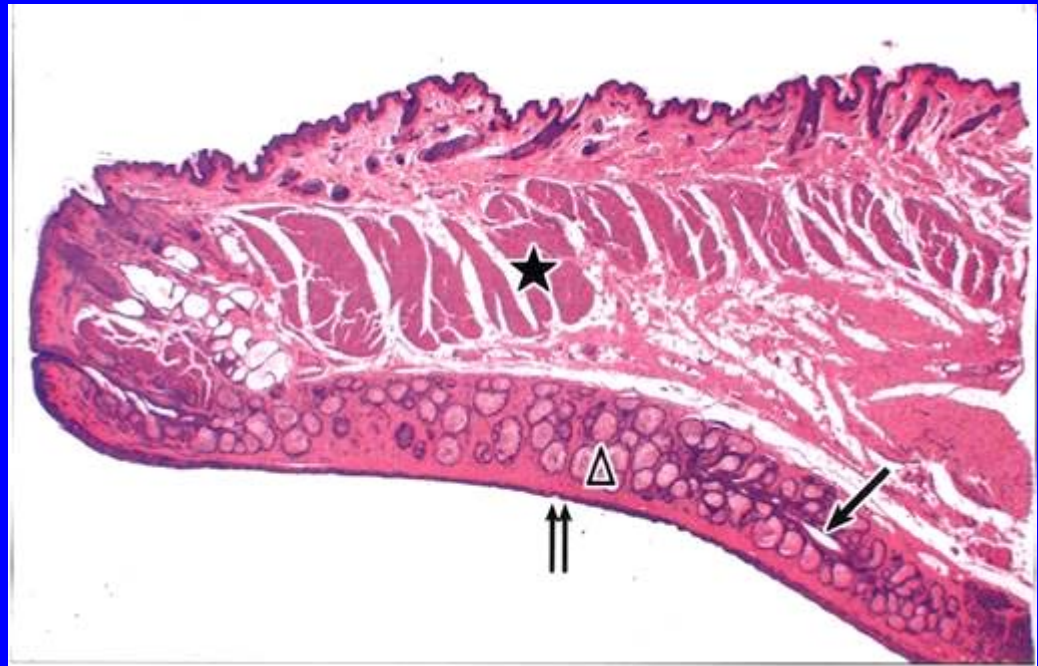
Papilla of optic nerve:



# Accessory Structure of The Eye

## 1. eyelid

- (1) skin
- (2) subskin tissue
- (3) muscularis
- (4) tarsus: tarsal glands
- (5) conjunctiva



# EAR

## 1. External ear :

auricle, external auditory meatus and tympanic membrane

## 2. Middle ear:

tympanic cavity, pharyngotympanic tube

## 3. Internal ear:

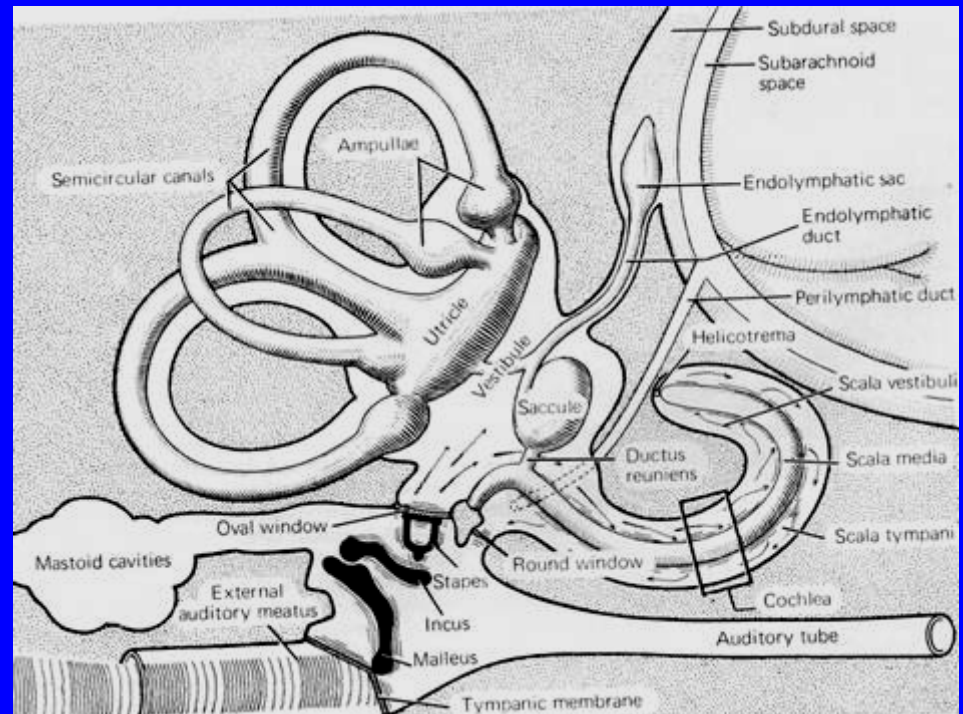
(1) osseous labyrinth  
osteosemicircular canals

vestibule

Cochlea

oval window

Round window

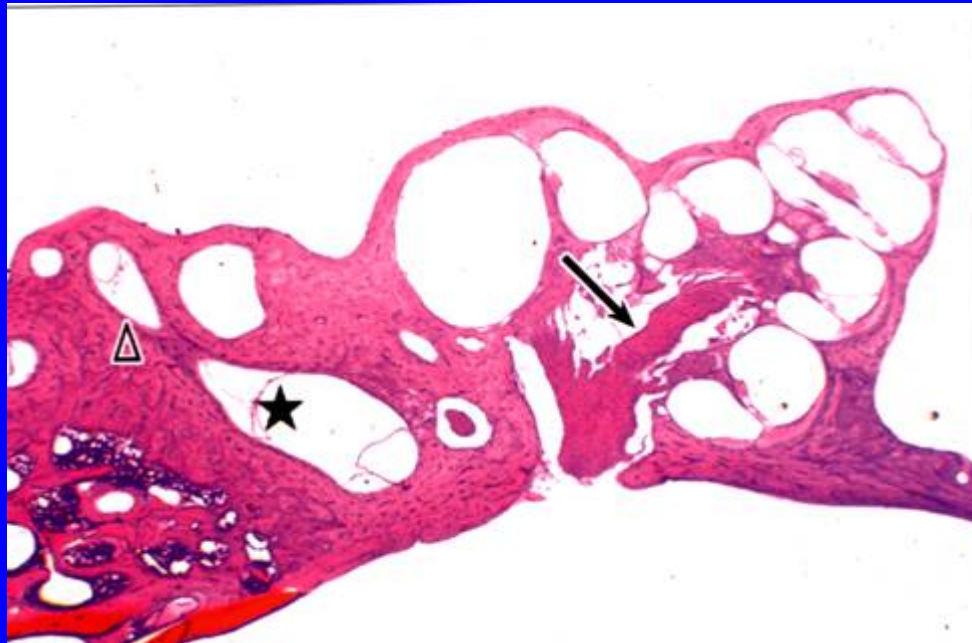


**cochlea: cochlea axis osseous spiral lamina  
scala vestibuli, tympanic scala, cochlea pore**

**(2) membranous labyrinth**

**A. membranous semicircular canal**

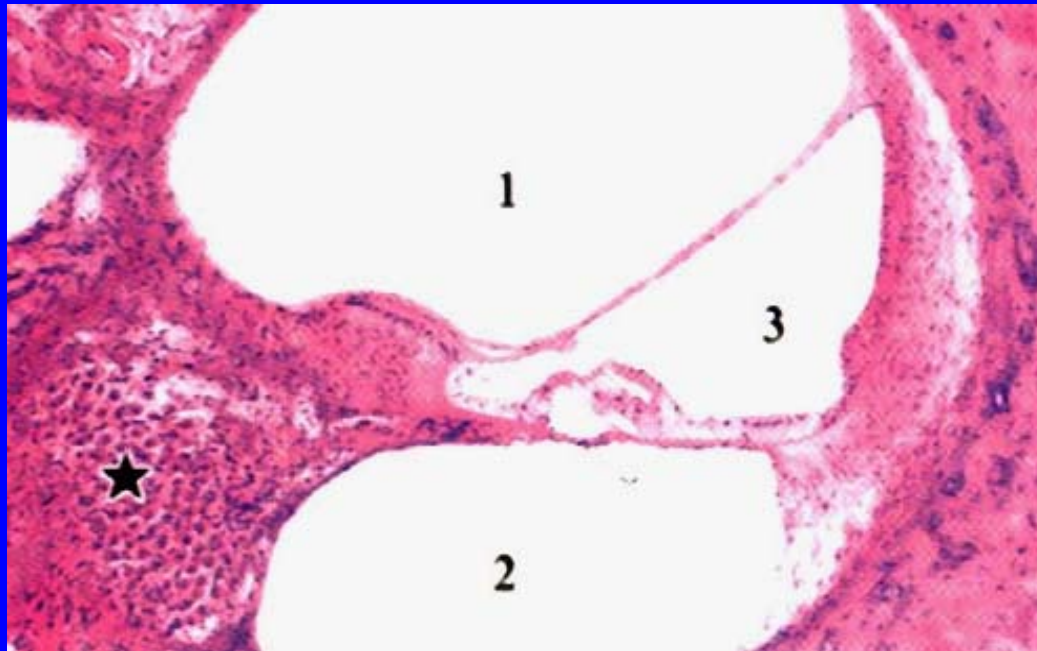
**B. sacculi and utriculi**





## C. Membranous cochlea

three walls, vestibular membrane, stria vascularis, spiral ligament, osseous spiral lamina and membranous spiral lamina, spiral limbus, spiral organ (Corti organ)



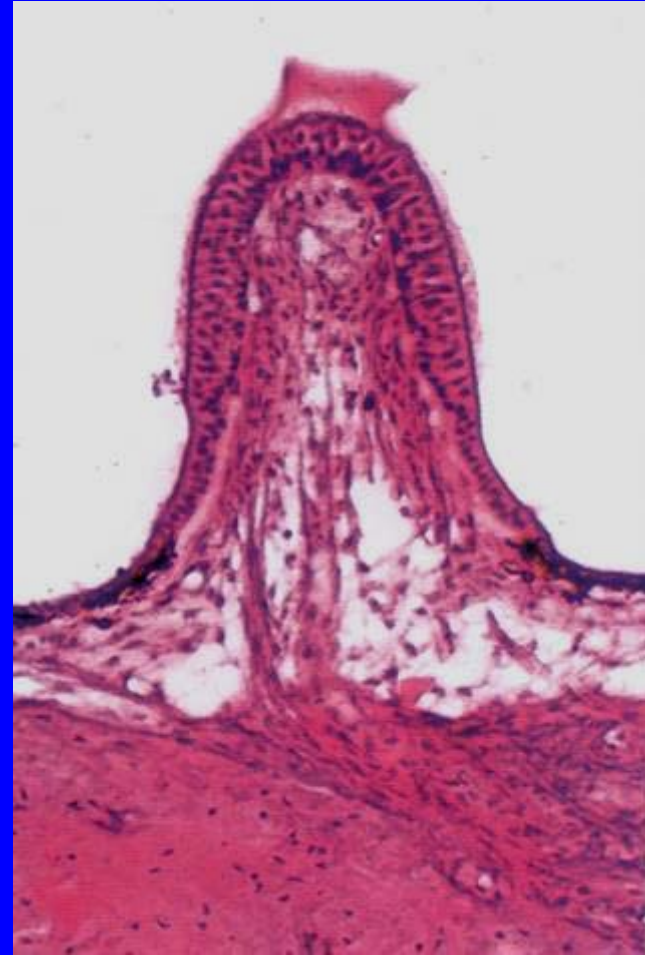
# **(1) crista ampullaris**

**Supporting cells: cupula**

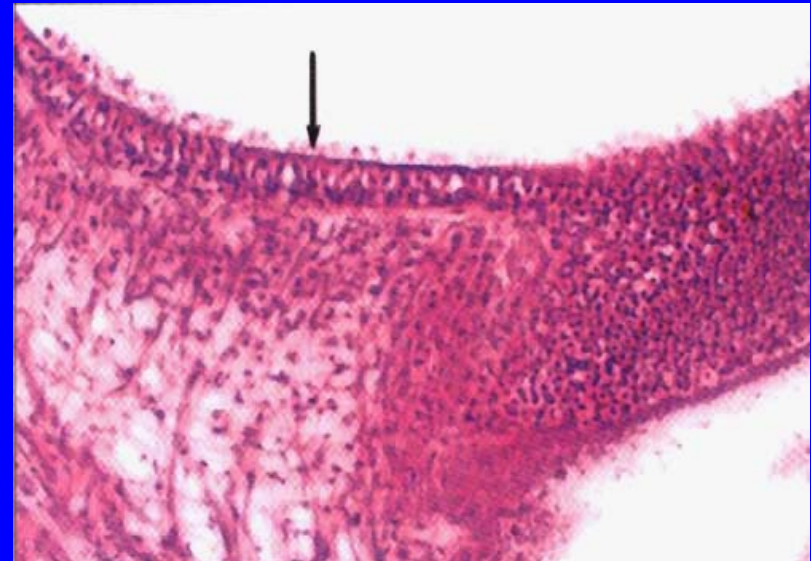
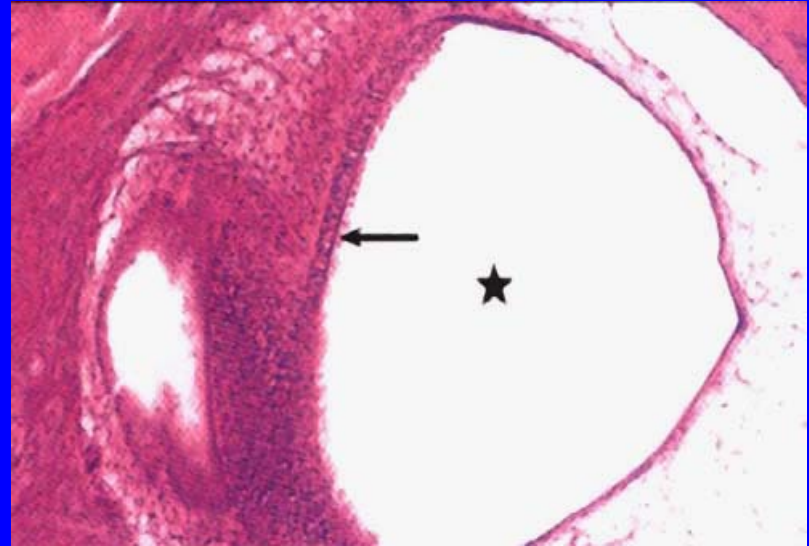
**Hair cells:**

**function:**

**Lamina propria:**



**(2) macula utriculi  
and macula sacculi  
macula acustica,  
supportint cells:  
hair cells:  
otolithic membrane:  
membrane statoconium  
(CaCO<sub>3</sub> crystal)  
Function:**



### (3) spiral organ:

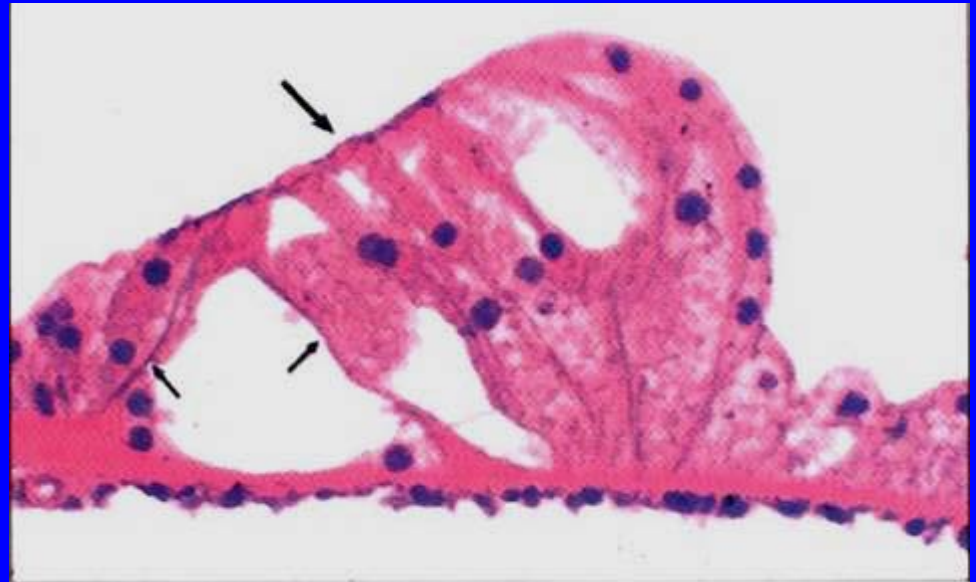
so called Corti organ:

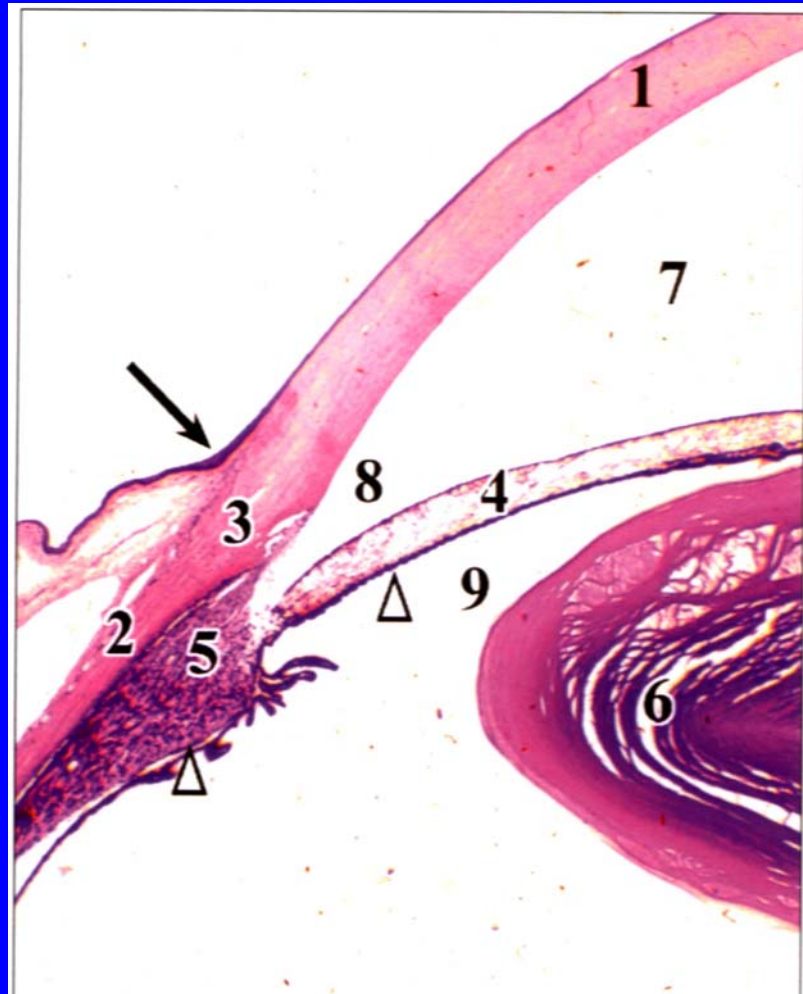
- Supporting cells:
- Pilar cells (internal , external pilar cells): inner tunnel
- Phalahgeal cells (internal, external phalahgeal cells)
- Hair cells (internal , external hair cells):

tectorial membrane,

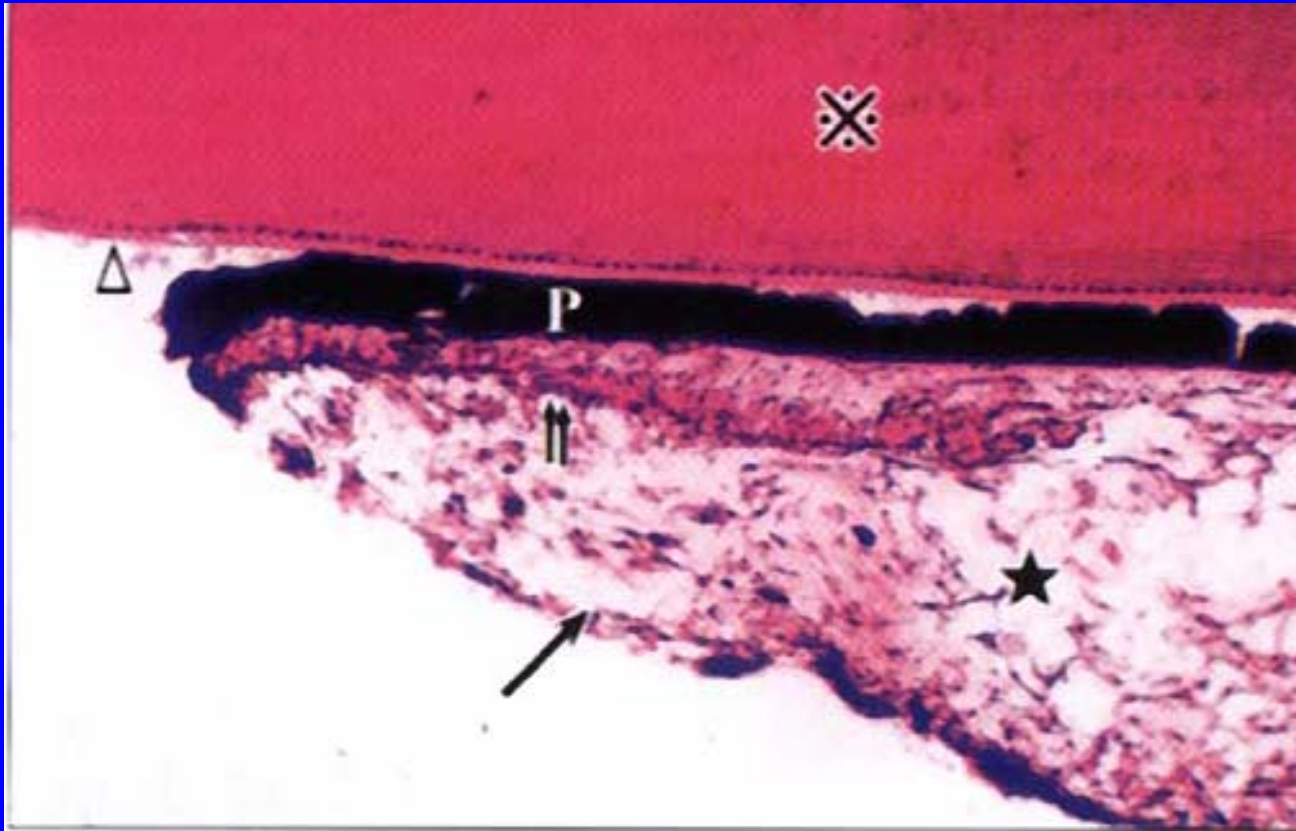
auditory string

- Spiral ganglion
- Pathway of sound
- wave transport:

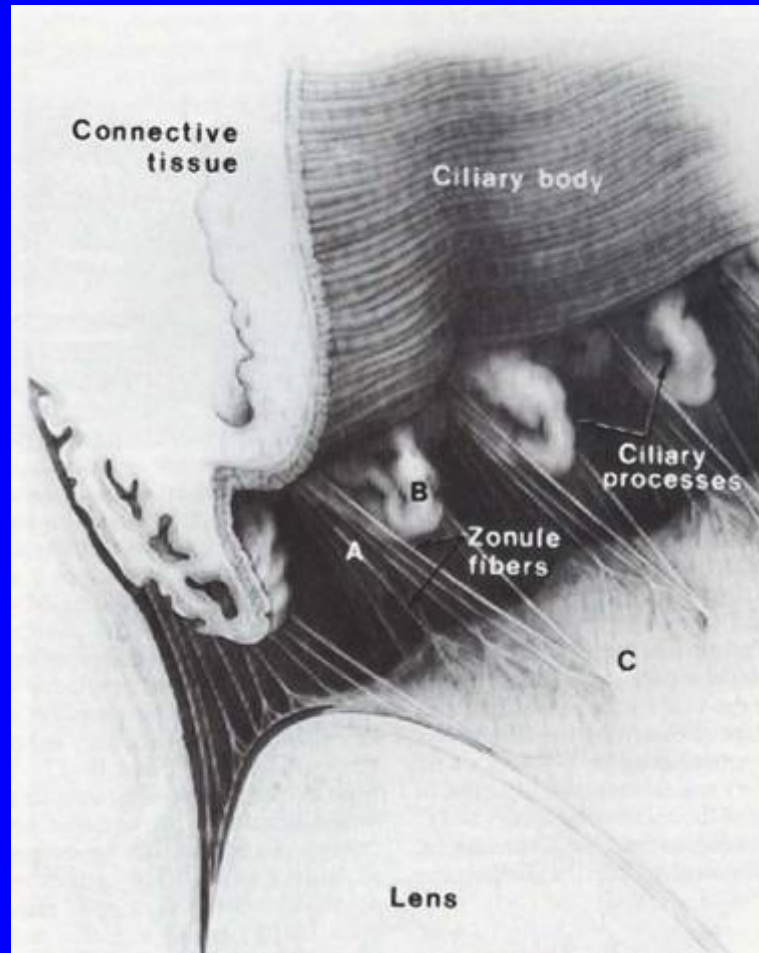




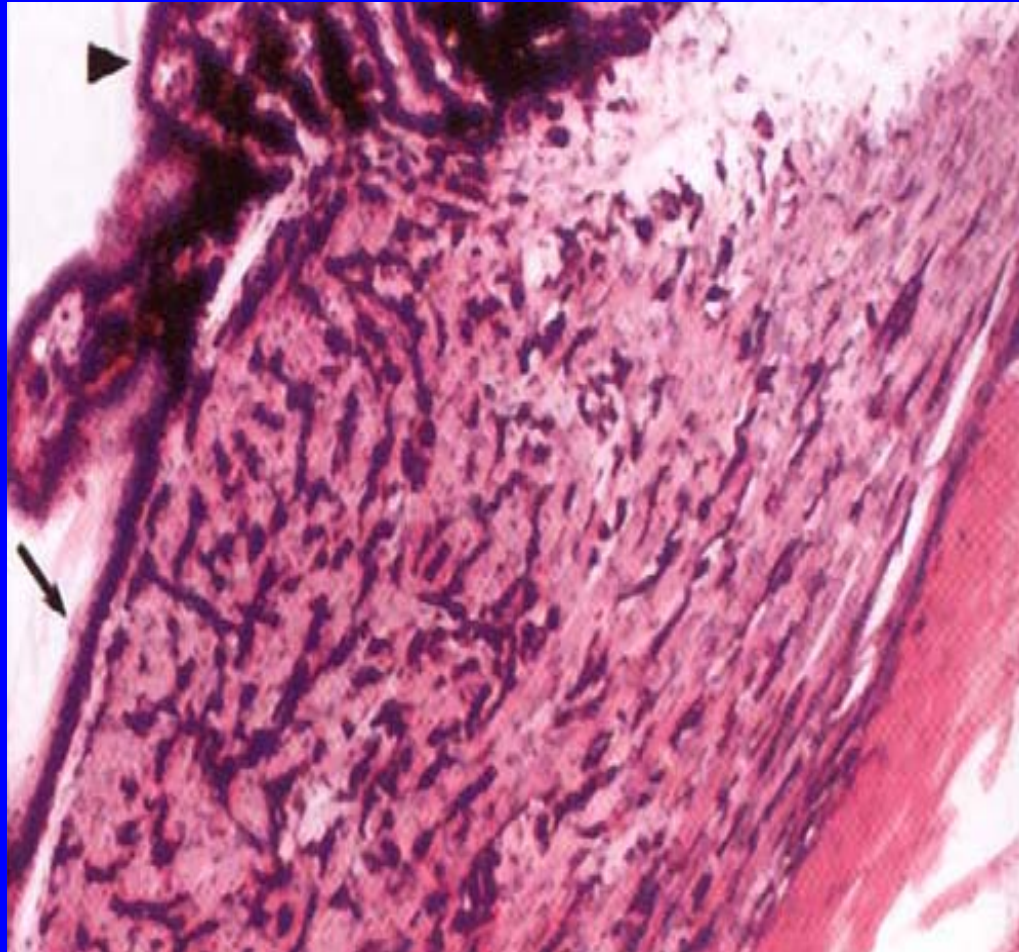
corneal limbus



Iris in HE

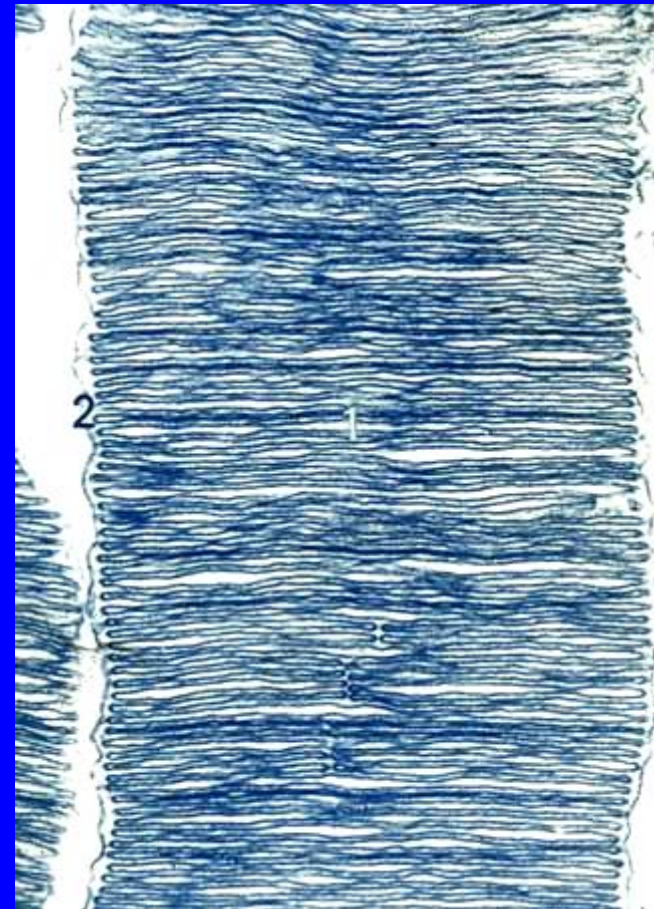
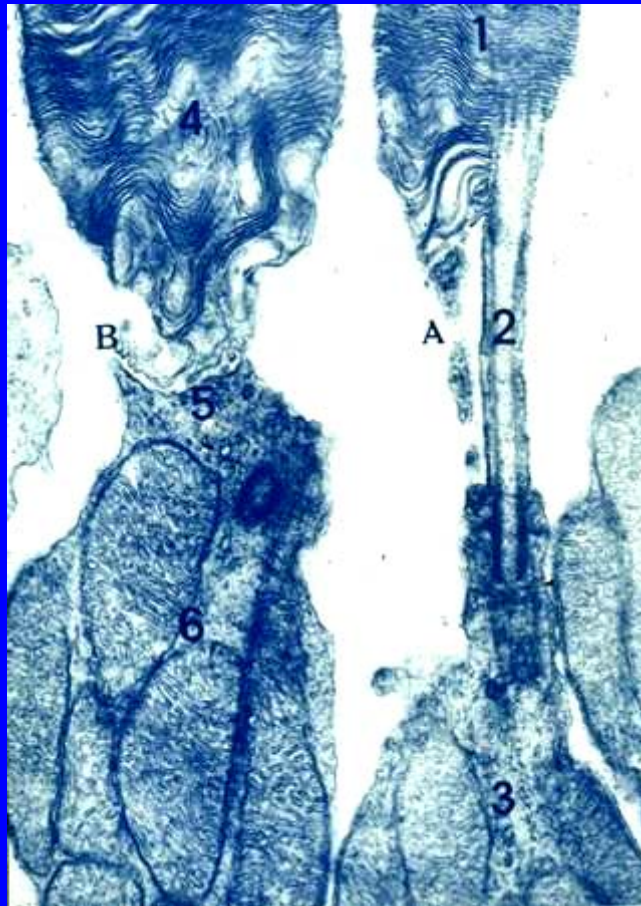


ciliary body

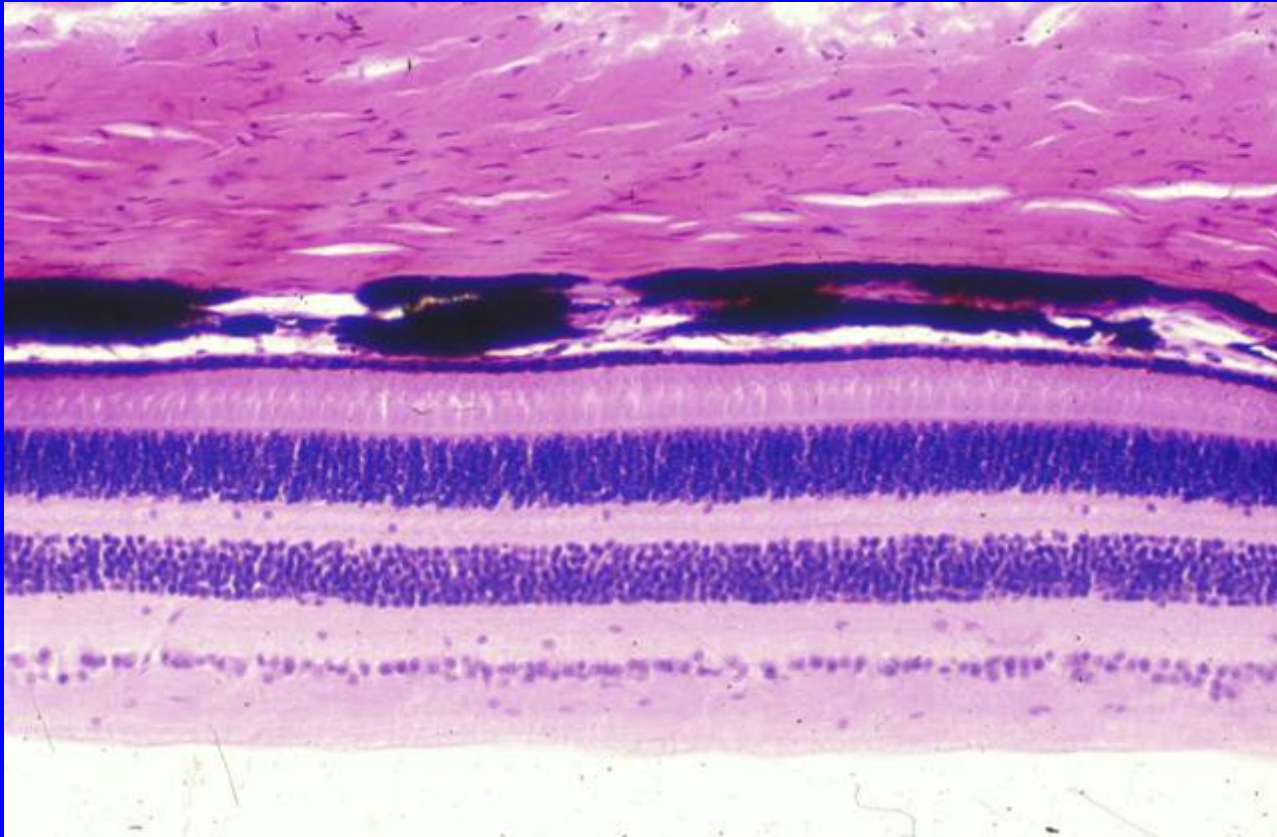


ciliary body in LM

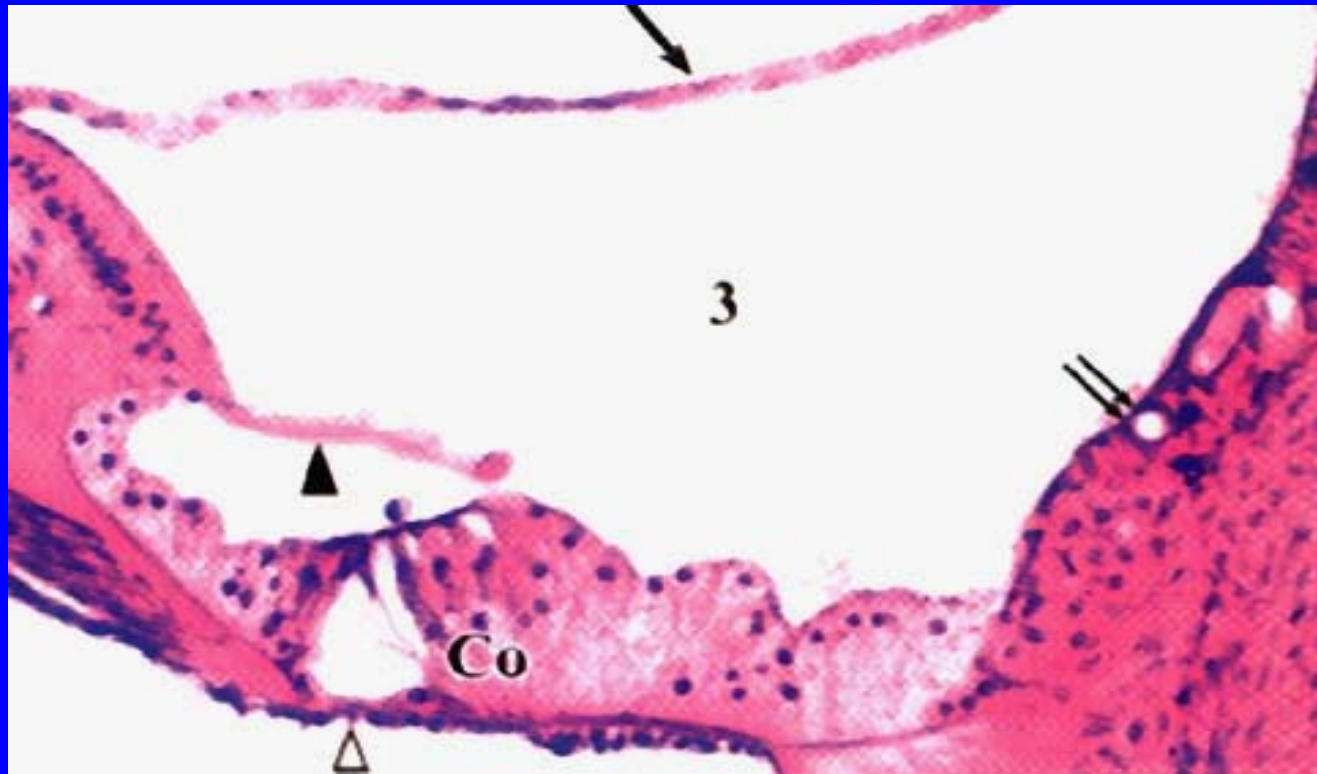




membranous disc



posterior portion of eye ball



spiral organ